



Genetically programmed changes in transcription of the novel progranulin regulator

Maria Keller^{1,2,3} · Claudia Gebhardt¹ · Sandra Huth⁴ · Dorit Schleinitz³ · Henrike Heyne⁵ · Markus Scholz⁶ · Michael Stumvoll^{1,3} · Yvonne Böttcher^{7,8} · Anke Tönjes³ · Peter Kovacs³

Received: 10 January 2020 / Revised: 18 June 2020 / Accepted: 18 June 2020
© The Author(s) 2020

Abstract

Progranulin is a glycoprotein marking chronic inflammation in obesity and type 2 diabetes. Previous studies suggested *PSRC1* (proline and serine rich coiled-coil 1) to be a target of genetic variants associated with serum progranulin levels. We aimed to identify potentially functional variants and characterize their role in regulation of *PSRC1*. Phylogenetic module complexity analysis (PMCA) prioritized four polymorphisms (rs12740374, rs629301, rs660240, rs7528419) altering transcription factor binding sites with an overall score for potential regulatory function of $S_{all} > 7.0$. The effects of these variants on transcriptional activity and binding of transcription factors were tested by luciferase reporter and electrophoretic mobility shift assays (EMSA). In parallel, blood DNA promoter methylation of two regions was tested in subjects with a very high ($N=100$) or a very low ($N=100$) serum progranulin. Luciferase assays revealed lower activities in vectors carrying the rs629301-A compared with the C allele. Moreover, EMSA indicated a different binding pattern for the two rs629301 alleles, with an additional prominent band for the A allele, which was finally confirmed with the supershift for the Yin Yang 1 transcription factor (YY1). Subjects with high progranulin levels manifested a significantly higher mean DNA methylation ($P < 1 \times 10^{-7}$) in one promoter region, which was in line with a significantly lower *PSRC1* mRNA expression levels in blood ($P = 1 \times 10^{-3}$). Consistently, rs629301-A allele was associated with lower *PSRC1* mRNA expression ($P < 1 \times 10^{-7}$). Our data suggest that the progranulin-associated variant rs629301 modifies the transcription of *PSRC1* through alteration of YY1 binding capacity. DNA methylation studies further support the role of *PSRC1* in regulation of progranulin serum levels.

Key messages

- *PSRC1* (proline and serine rich coiled-coil 1) SNPs are associated with serum progranulin levels.
- rs629301 regulates *PSRC1* expression by affecting Yin Yang 1 transcription factor (YY1) binding.
- *PSRC1* is also epigenetically regulated in subjects with high progranulin levels.

Keywords *PSRC1* · Progranulin · DNA methylation · EMSA

Maria Keller and Claudia Gebhardt contributed equally to this work.

Electronic supplementary material The online version of this article (<https://doi.org/10.1007/s00109-020-01942-7>) contains supplementary material, which is available to authorized users.

✉ Anke Tönjes
Anke.Toenjes@medizin.uni-leipzig.de

✉ Peter Kovacs
Peter.Kovacs@medizin.uni-leipzig.de

Extended author information available on the last page of the article

Introduction

Progranulin (PGRN) is a glycoprotein with a wide range of functions involved, e.g., in inflammatory pathways, metabolism, cell proliferation, and lysosome regulation [1–3]. PGRN is encoded by the *GRN* gene [4], whose mutations can cause frontotemporal lobar degeneration and neuronal ceroid lipofuscinosis [5, 6], but may potentially be also involved in the pathogenesis of Alzheimer's disease [6–9].

Recent genome-wide association studies identified several loci associated with serum progranulin levels. The most prominent are the *CELSR2-PSRC1-MYBPHL-SORT1*, the *CDH23-*

PSAP, and the *GRN* locus [10–12]. In particular, the Sortilin 1 gene (*SORT1*) has been extensively studied as a target gene of the associated variants and shown to regulate circulating low-density lipoprotein levels influencing risk of cardiovascular diseases [13, 14]. *SORT1* is affected by several microRNAs, e.g., miR-146a and miR-182, and is considered to play a role in arterial calcification and chronic inflammation in endothelial cells [15–17].

Besides *SORT1*, *PSRC1* (proline and serine rich coiled-coil 1) has been suggested by recent data including eQTLs (expression quantitative trait locus) [11] to be a target gene of single-nucleotide polymorphisms (SNPs) associated with serum progranulin levels. Furthermore, gene silencing experiments demonstrated the role of *PSRC1* in regulation of progranulin secretion in vitro; however, the functional variant and underlying molecular mechanism have not yet been clarified.

In the present study, we therefore performed in silico and in vitro experiments to identify the potentially causal variants for increased serum progranulin levels and to elucidate their role in transcriptional and epigenetic regulation of *PSRC1*.

Material and methods

The Sorbs cohort

A total of 200 individuals with a mean BMI of 26.0 ± 4.2 kg/m² and a mean age of 46 ± 16 years were included in the *PSRC1* promoter methylation analysis. They are part of a metabolically well-characterized cohort of Sorbs from Eastern Germany that was extensively phenotyped for a wide range of anthropometric and metabolic traits (Supplementary Table 1) [18, 19]. The 200 subjects were selected according to their maximal distance in progranulin serum levels, building one group with very high (mean \pm SD 151.98 ± 20.86 ng/ml; $N=100$) and the other one with very low (mean \pm SD 73.98 ± 10.04 ng/ml; $N=100$) concentrations. In addition, both groups were matched for age and BMI by filtering the groups using *t*-statistics, and for gender and smoking status by conducting a chi-square test. Subjects with diabetes were not included in the present analysis. All participants gave their written informed consent, and the study was approved by the ethics committee of the University of Leipzig.

Detailed description of all study participants is provided in the Supplemental Table 1.

Functional annotation

Functional annotation for all SNPs in linkage disequilibrium (LD, defined as $r^2 \geq 0.86$ in Europeans of the 1000 Genomes

Phase I data) with the leading SNP (rs660240) from the initial GWAS (genome-wide association study) for progranulin serum levels [11] was performed using the phylogenetic module complexity analysis (PMCA) [20] by Genomatix GmbH (München, Germany). This method was used to narrow down potentially causal cis-regulatory variants for further functional analysis in vitro.

Cell culture

HepG2 and HeLa cell lines (ATCC; Manassas, Virginia) were used for all in vitro studies. Cells were maintained in Dulbeccos Modified Eagle Medium (DMEM; Gibco; 5.56-mM glucose, 1-mM pyruvate, 4-mM L-glutamine, ThermoFisher Scientific, Germany) supplemented with 10% fetal bovine serum (Biochrom GmbH, Germany).

Preparation of reporter constructs

Single-stranded oligonucleotides harboring each SNP as well as a *Xho* I restriction site on the 5' and 3' ends were purchased from MWG-Biotech (Ebersberg, Germany). Oligo-sequences are given in Table 1. Complementary oligos were annealed. Annealed oligos were digested with *Xho* I and cloned to the minimal promoter containing firefly luciferase vector pGL4.23.

Luciferase reporter assays

Functional relevance of candidate SNPs (rs12740374, rs629301, rs660240, rs7528419; all LDs $r^2 > 0.94$) on transcriptional activity was evaluated by luciferase assay. HepG2 as well as HeLa cells were transfected for the luciferase assay. Cells were co-transfected with luciferase reporter constructs and the Renilla luciferase vector pGL4.74 as internal control using Fugene HD (Promega, Madison, WI) according to the manufacturer's procedures. After 48 h, cells were harvested and luciferase activity was measured using the Dual Luciferase System (Promega, Madison, WI) as described in the manufacturer's instructions. Ratio of firefly to Renilla luciferase was calculated. Assays were performed at least in triplicates, and values were normalized to pGL4.23/pGL4.74 empty control.

Electrophoretic mobility shift assay

The JASPAR (<http://jaspar.genereg.net>) and PROMO (http://algggen.lsi.upc.es/cgi-bin/promo_v3/promo/promoinit.cgi?dirDB=TF_8.3) online databases were used to predict transcription factor binding to alleles of candidate SNPs. Nuclear protein was extracted from HeLa cells. IRDye 700 (SNPs) or IRDye 800 (positive

Table 1 Oligo-sequences used for preparation of reporter constructs and EMSA

	Application	5'-3' sequence
rs12740374	Luciferase assay	taagcactcgagGAGGAAGAGTAAACACAGTGCTGGCTCGGCTGCCCTGAGG[G/T] TGCTCAATCAAGCACAGGTTCAAGTCTGGGTTCTGGTGTctcgagtgaag
rs629301	Luciferase assay	taagcactcgagCTAACCATCAGATTGTACAGTTTGGTTGTTGCTGTAAATA[T/G] GGTAGCGTTTTGTGTTGTTGTTTTTTCATGCCCCATACTctcgagtgaag
rs660240	Luciferase assay	taagcactcgagAGAGAGAGTAAATATATTTGTTTTATTTATTTGCTTTTTG[T/C] GTTGGGATGGGTTTCGTGTCCAGTCCCGGGGTCTGATATGctcgagtgaag
rs7528419	Luciferase assay	taagcactcgagAAAGGACAAAGCCACACGCAGCCAGGGCTTCACACCCTTC[A/G] GGCTGCACCCGGGCAGGCCTCAGAACGGTGAGGGGCCAGGctcgagtgaag
rs12740374	EMSA	CTGCCCTGAGG[G/T]TGCTCAATCAAGC
rs629301	EMSA	GCTGTAAATA[T/G]GGTAGCGTTTTG
YY1 control	EMSA	CCGATAAGACGCCATTTAAAGTCCTACGTCA

5'-3' sequences of (+) strand are given. Genomic sequences are depicted in upper case letters; *Xho* I restriction site is given in underlined lower case letters. Parentheses indicate positions of SNP

control) labeled single-stranded oligos were purchased from metabion (Planegg, Germany). Oligo-sequences are given in Table 1. Oligos were annealed to generate double-stranded probes. Electrophoretic mobility shift assay (EMSA) was conducted as follows. Each reaction contained of 7- μ g nuclear extract, 4-nmol probe, 1 X binding buffer (10-mM TRIS, 50-mM NaCl, pH 7.5), 2-mM dithiothreitol, 1- μ g hering sperm DNA, and 0.25% Tween 20. Binding reaction was performed 30 min at room temperature. For supershift reactions, 4 μ g of anti-Yin Yang 1 (YY1) (clone H-10, Santa Cruz Biotechnology Inc., Dallas, TX) was added to the reaction mixture and reactions were incubated for further 30 min. Samples were separated on a 4% native polyacrylamide gel in 0.5 X TRIS-Borate-EDTA (45-mM TRIS, 45-mM boric acid, 1-mM EDTA) followed by visualization with an Odyssey Infrared Imager (LI-COR Biosciences, Lincoln, NE).

DNA methylation analysis

In parallel, DNA methylation analyses were performed for two sequence segments within the *PSRC1* promoter region (PyroMark assay 1 5'-3'UTR: TCTCCGCGCACGCG AGCACGCGCACTCGCAGCCTCAACCCTCGGCTC CGCCACCGGGATGCAGTCTTCTG, PyroMark assay2 5' - 3' UTR: ACCGTTCTGGAGACTGGG TGCTCGGCGGCCAGCAGAGGG AGCGGGG) using the pyrosequencing technique as described elsewhere [21] (Qiagen, Hilden, Germany) to test potential epigenetic differences in the *PSRC1* promoter locus between subject with high vs. low progranulin serum levels. PyroMark assays were designed using the PyroMark Assay Design software 2.0 (Qiagen, Hilden, Germany). Briefly, target region was virtually bisulfite converted and primers were selected according to

program-specific quality criteria. All reactions were performed in duplicates including two non-template controls per plate and sequenced on PyroMark Q24 (Qiagen, Hilden, Germany).

rs629301 genotype data

Based on i) our previous GWAS [11] which revealed rs629301 (A>C; MAF = 0.24) to be associated with serum progranulin and as a strong eQTL for the *PSRC1* gene locus, and ii) present findings from the functional annotation studies using PMCA (see below in the “Results” section) further supporting the functional role of this variant, we focused on rs629301 for downstream functional analysis. Genotype data was available from a genome-wide data set for 977 individuals from the German population of Sorbs [22]. Rs629301 genotype distribution (AA/AC/CC: 616/322/39) was in Hardy-Weinberg equilibrium ($P = 0.7$).

Statistical analysis

CpG methylation levels per site were used as continuous variables, and mean levels were calculated per assay. All analyses were performed using R [23]. Wilcoxon rank sum t test was used to compare differences between subjects showing high vs. low progranulin serum levels. A chi-square test was used to estimate differences in the genotype distribution between both groups. Linear regression was applied to detect differences of *PSRC1* mRNA expression levels (available from previous studies) [11] between the different genotypes using additive mode of inheritance (AA vs. AC vs. CC coded as 0 vs. 1 vs. 2, respectively) including adjustments for age and sex.

Statistical analyses for in vitro experiments were performed using the Graphpad Prism software version 6 (Graphpad Software Inc., San Diego, CA). Differences in luciferase assays were assessed by one-way ANOVA followed by Dunnett's post hoc test to account for multiple comparisons. A *P* value of < 0.05 was considered as statistically significant in all analyses.

Results

Phylogenetic module complexity analysis identifies four genetic variants with potential regulatory function

Ten SNPs in tight LD (defined as $r^2 \geq 0.86$ in Europeans; Supplementary Table 3) with the GWAS lead SNP rs629301, previously shown to be associated with progranulin serum level [11], were functionally annotated using the PMCA [20] method to identify cis-regulatory variants, most likely affecting *PSRC1* gene expression (Table 2). Among the 10 analyzed variants, we identified 4 SNPs (rs12740374, rs629301, rs660240, and rs7528419) with an overall score for the prediction of a potential regulatory region of $S_{all} > 7.0$, suggesting that these variants are classified and belong to a complex region [20]. The highest PMCA score was found for rs12740374 ($S_{all} = 9.0$, Table 1).

rs629301 alters gene expression in vitro

Functional relevance of the 4 candidate SNPs (rs12740374, rs629301, rs660240, rs7528419) on transcriptional activity was tested by using luciferase reporter assays. We observed significant differences in luciferase activities in both HepG2 and HeLa cells only for rs629301. Luciferase activities were lower in pGL4-rs629301A compared with pGL4-rs629301C allele carrying vector (Fig. 1 a and b). In addition, for rs12740374, the pGL4-rs12740374T showed higher luciferase activity than the pGL4-rs12740374G vector, although both alleles appeared to increase luciferase activities when compared with control vectors (Fig. 1 a and b).

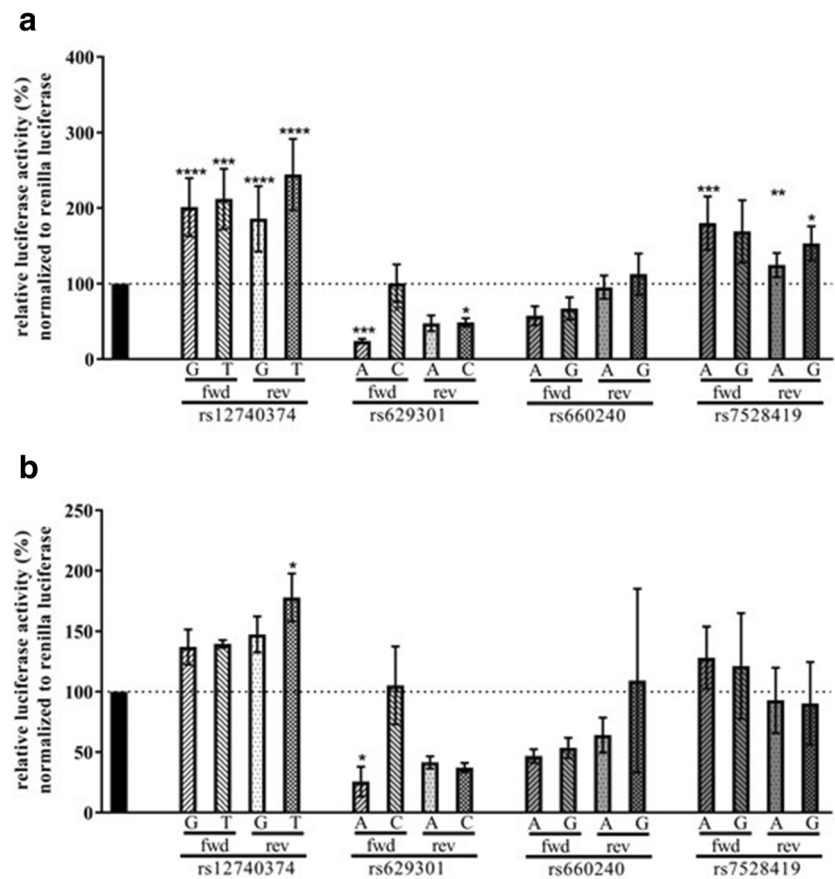
rs629301 affects binding of Yin Yang 1 regulating the transcription of *PSRC1*

Based on findings from luciferase assays, we next tested the binding of the rs629301 and rs12740374 minor and major alleles and demonstrated DNA-protein complexes only using oligo (A) for the major allele sequence of the rs629301 (Fig. 2). In summary, similar protein-binding pattern for the two rs12740374 alleles was observed

Table 2 Phylogenetic module complexity analysis (PMCA) identifies four genetic variants with potential regulatory function

SNP	chr	From	To	#seq	Restricted set of input sequences					Complete set of input sequences					Complex				
					W_{TFBS} restr	P -est W_{TFBS} restr	$W_{modules}$ restr	P -est $W_{modules}$ restr	W_{TFBS} in modules-restr	P -est in module-restr	W_{TFBS}	P -est $W_{modules}$	P -est W_{TFBS}	W_{TFBS} in modules	P -est W_{TFBS} in module	Overall score S_{all}	Overall score S_{all}		
rs12740374	1	109817531	109817650	11	62	0.001	26	0.001	17	0.001	0.001	227	0.001	81596	0.001	722	0.001	9.0013	1
rs1277930	1	109822084	109822203	10	31	0.167	0	1	0	1	1	100	0.241	9330	0.001	226	0.004	6.0164	0
rs4970836	1	109821738	109821857	6	9	0.568	0	1	0	1	1	18	0.74	88	0.006	40	0.021	4.0304	0
rs583104	1	109821248	109821367	10	54	0.106	27	0.001	23	0.003	0.003	177	0.133	105319	0.001	747	0.001	6.877	0
rs599839	1	109822107	109822226	9	31	0.71	3	0.366	6	0.337	0.337	93	0.831	2601	0.076	200	0.321	1.6931	0
rs602633	1	109821452	109821571	7	29	0.051	90	0.001	47	0.001	0.001	87	0.101	119261	0.001	506	0.001	6.9965	0
rs629301	1	109818247	109818366	11	81	0.001	6180	0.001	336	0.001	0.001	178	0.019	116072	0.001	1145	0.001	7.7221	1
rs646776	1	109818471	109818590	10	4	0.23	0	1	0	1	1	49	0.116	44618	0.001	212	0.001	6.9364	0
rs660240	1	109817779	109817898	10	109	0.006	8505	0.001	484	0.001	0.001	195	0.046	113309	0.001	1192	0.001	7.3381	1
rs7528419	1	109817133	109817252	11	31	0.001	27	0.001	26	0.001	0.001	88	0.014	11687	0.001	333	0.001	7.8547	1

Fig. 1 Transcription activity of four candidate SNPs using luciferase assay. Promotor activity of firefly luciferase levels is shown relative to Renilla luciferase. Values are normalized to the luciferase levels of pGL4.23/pGL4.74 empty vector. Three replicate experiments were performed in duplicates, mean \pm SD is shown. Analysis was done by one-way ANOVA followed by Dunnett's post hoc Test. * $P < 0.05$, ** $P < 0.01$, *** $P < 0.001$, **** $P < 0.0001$. ns, not significant. **a** Luciferase activity in HepG2 cells. **b** Luciferase activity in HeLa cells



(Fig. 2). In contrast, a different binding pattern for the two rs629301 alleles was found, with an additional prominent band for the A allele (Fig. 2). Moreover, JASPAR and PROMO databases suggested YY1 transcription factor consensus binding site around rs629301 (Fig. 3a). Addition of YY1 antibody led to a supershift of the prominent band observed in the rs629301 A allele (Fig. 3b). No supershifting for binding in the major and minor allele sequences of rs12740374 (data not shown) and minor allele of the rs629301 was present (Fig. 3b).

***PSRC1* DNA methylation is increased in subjects with high serum progranulin levels**

The subpopulation of individuals selected according to their either very high ($N = 100$, mean \pm SD 151.98 ± 20.86 ng/ml) or very low ($N = 100$, mean \pm SD 73.98 ± 10.04 ng/ml) serum progranulin level (Fig. 4a, $P < 1 \times 10^{-15}$) revealed a significant inverse difference in the *PSRC1* mRNA expression levels (Fig. 4b, $P = 1 \times 10^{-3}$). *PSRC1* promoter methylation for assay 1 (Fig. 4c) is in line with this and shows a significantly ($P < 1 \times 10^{-7}$) higher mean methylation level in “high progranulin” subjects.

The second analyzed assay within the *PSRC1* promoter did not show significant differences between the progranulin groups (data not shown).

Rs629301 is associated with *PSRC1* mRNA expression and serum progranulin levels

Distribution of rs629301 genotypes between the progranulin groups (“high” AA = 76, AC = 18, CC = 0; “low” AA = 36; AC = 44; CC = 14) clearly indicated overrepresentation of the A allele in the “high” progranulin group (Fig. 5a, $P < 1 \times 10^{-8}$). Again, inverse with the protein levels, the A allele was significantly associated with lower *PSRC1* mRNA expression (Fig. 5b, $P < 1 \times 10^{-7}$, additive mode of inheritance), whereas, albeit not significant (Fig. 5c), *PSRC1* methylation levels were increased.

Discussion

Progranulin is a secreted protein with important functions in processes including immune and inflammatory responses, metabolism, and embryonic development [24].

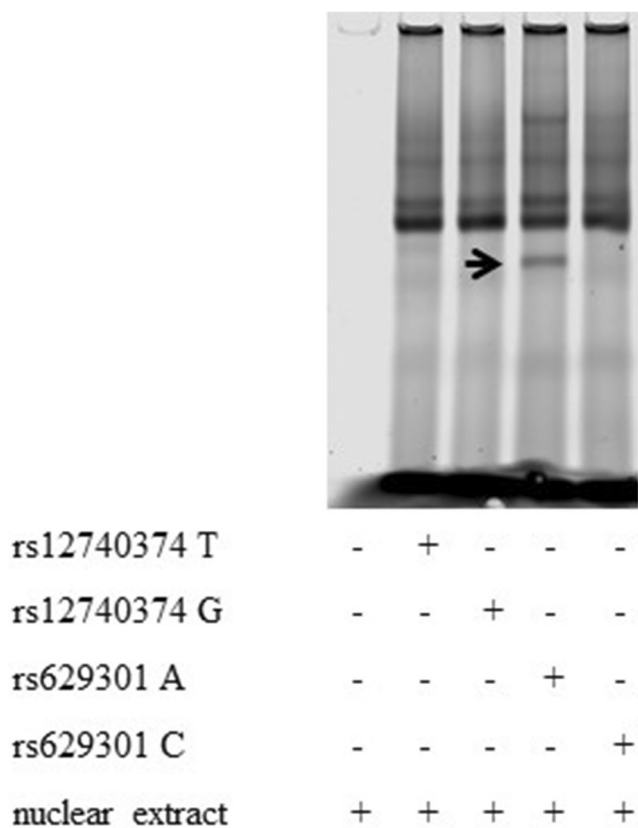


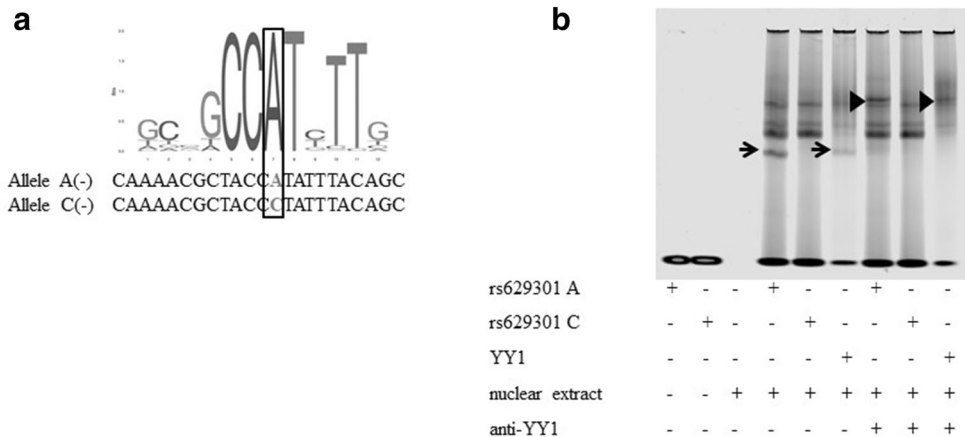
Fig. 2 Electrophoretic mobility shift assay (EMSA) of candidate SNPs. Allelic differences in protein binding are only observed for SNP rs629301. Mobility shift is indicated by arrow

It is assumed to be involved in chronic inflammation in obesity and T2D [1, 25]. Heritability of circulating progranulin levels is estimated to be around 30% [11]. A previous genome-wide association meta-analysis of five European cohorts along with subsequent eQTL analyses in peripheral blood mononuclear cells (PBMCs) pointed to *PSRC1* as a potential target gene of the locus

significantly associated with serum progranulin levels [11]. Moreover, functional studies in cell cultures supported the role of *PSRC1* in the regulation of progranulin secretion. In particular, 60% reduction of *PSRC1* expression by siRNA silencing in murine 3T3-L1 preadipocytes resulted in a consecutive reduction in progranulin secretion of approximately 30% [11]. To identify the potentially causal variant altering *PSRC1* expression, we performed in silico and in vitro analyses and tested the effect of epigenetic regulation on progranulin serum levels in vivo. In summary, rs629301 turned out to be the most likely causative variant explaining the association of the abovementioned locus with circulating progranulin levels.

An initial PMCA prioritized four polymorphisms (rs12740374, rs629301, rs660240, rs7528419) potentially altering transcription factor binding sites (all with $S_{all} > 7.0$). The effects of these variants on transcriptional activity were tested by luciferase reporter assays, which revealed lower activities in vectors carrying the rs629301-A compared with the C allele. Moreover, EMSA indicated a different binding pattern for the two rs629301 alleles, with an additional prominent band for the A allele. Publicly available databases JASPAR and PROMO predicted a T allele-specific YY1 transcription factor binding site for this locus, which was subsequently confirmed by EMSA supershift using the respective YY1 antibody. Although these findings cannot explain the recently postulated role of *PSRC1* in the control of progranulin secretion, they are definitely supporting the regulatory role of genetic variation in *PSRC1* and, thus, are complementing the previously reported rs660240 as an eQTL for *PSRC1* mRNA in PBMCs [11]. Furthermore, publicly available data for rs629301 additionally support the role of liver as target tissue for the identified effect on *PSRC1* regulation by revealing the strongest eQTL on *PSRC1* mRNA expression in liver ($P < 1 \times 10^{-33}$, Supplementary

Fig. 3 Electrophoretic mobility shift assay (EMSA) of rs629301. **a** A allele of a YY1 binding site. **b** Supershift experiment confirms YY1 binding site prediction. Mobility shift is indicated by arrowheads



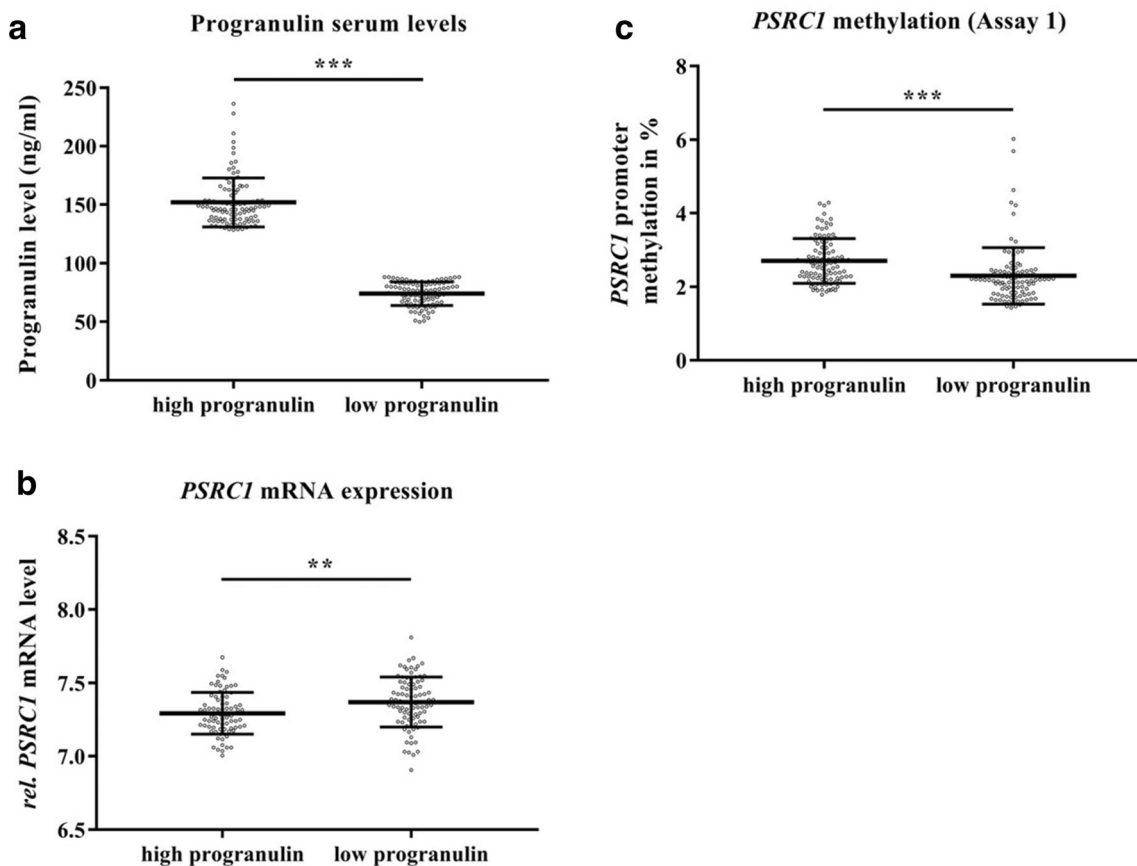


Fig. 4 Progranulin levels and epigenetic regulation of PSRC1 in the Sorbs population ($N=200$). **a** The progranulin serum level in ng/ml. **b** The relative mRNA expression values of PSRC1. **c** The corresponding

DNA methylation levels for PSRC1 assay 1 represented in %. All data in **a–c** is shown as scatter dot plots representing mean \pm SD. ** $P < 0.01$, *** $P < 0.001$

Table 2). In parallel, DNA promoter methylation of two regions (assay 1: 10CpGs; assay 2: 4CpGs) showed that subjects with high progranulin levels manifested a significantly higher mean DNA methylation in one promoter region (assay 1), which was in line with a significantly lower PSRC1 mRNA expression levels in blood. Consistently, rs629301-A allele was associated with lower PSRC1 mRNA expression and higher DNA methylation.

In summary, our data shed more light on the molecular mechanisms behind the associations of genetic variants with progranulin concentrations. Moreover, they strongly support *PSRC1* as a plausible target gene of these genetic variants. Although the underlying functional mechanism linking progranulin and PSRC1 is not fully understood yet, there is a good evidence that PSRC1 might be involved in progranulin-dependent regulation of the Wnt/ β -catenin signaling pathway [26]. As has previously been shown, β -catenin is directly regulated by PSRC1 [27]. An increased progranulin serum level may inhibit PSRC1 activity via Wnt binding and thereby lead to reduction of β -catenin, further turning down β -catenin-

dependent transcription factors such as the TCF/LEF family [28]. Vice versa, PSRC1 might affect progranulin as shown by *PSRC1* silencing experiments in vitro [11]. Whether there is a feedback allowing directional switches in mutual effects between PSRC1 and progranulin remains to be investigated in further studies. Nevertheless, further support for the relationship between PSRC1 and progranulin emerges from reports on progranulin-deficient mice [29] and patients with psoriasis, where progranulin was negatively correlated with β -catenin expression in psoriatic skin lesions [30]. In addition, an enhanced PSRC1 activity may increase β -catenin expression, which in turn may inhibit NF- κ B expression and thereby lead to an anti-inflammatory potential as demonstrated in apoE^{-/-} mice [31].

Conclusion

In conclusion, our data suggest that the progranulin-associated variant rs629301 modifies the transcription of *PSRC1* through

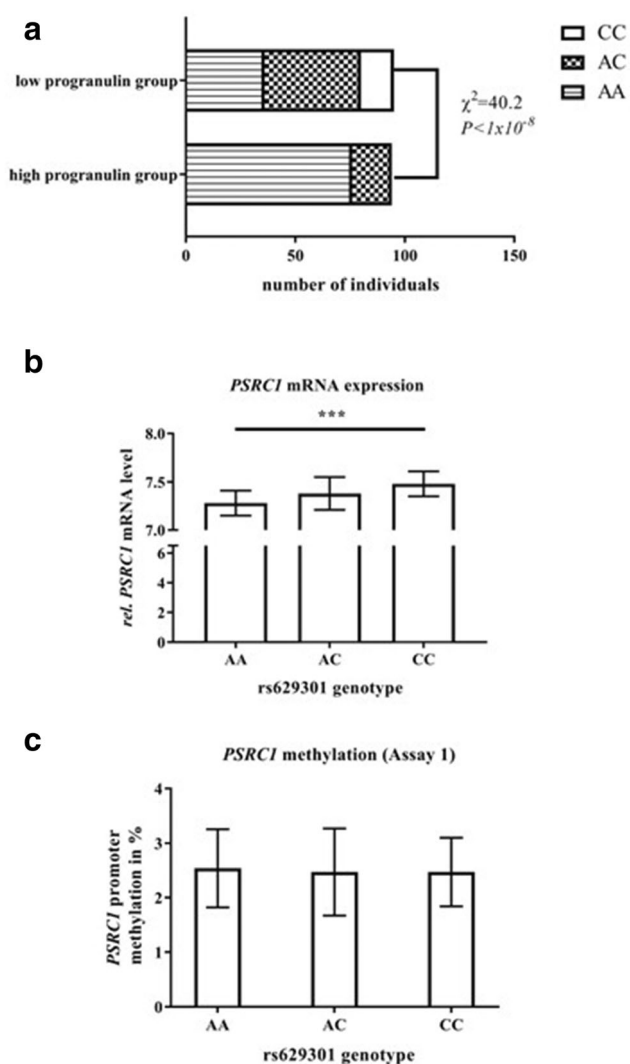


Fig. 5 Genotype effects on progranulin and PSRC1 regulation in the Sorbs population ($N=200$). **a** The genotype distribution between subjects showing a high (AA = 76, AC = 18, CC = 0) vs. low (AA = 36, AC = 44, CC = 15) progranulin serum level. **b** Relative mRNA expression values distributed over the rs629301 genotype. **c** The corresponding DNA methylation levels (%) for PSRC1 assay 1. **a** is presented as number of individuals, and **b** and **c** are presented as bar plots showing mean \pm SD values. *** $P < 0.001$

alteration of YY1 binding capacity. YY1 may act indirectly as progranulin repressor most likely by inhibiting *PSRC1* expression. DNA methylation studies further support the role of *PSRC1* in regulation of progranulin serum levels.

Acknowledgments Open Access funding provided by Projekt DEAL. We thank all those who participated in the studies. We would like to acknowledge statistical support by Tobias Wohland and excellent technical assistance by Beate Gutschmann and Ines Müller.

Author contributions MK and CG performed most laboratory work, data analysis, and statistical work. MK and PK wrote the first manuscript draft. SH prepared luciferase constructs and performed luciferase assays. HH supported the PMCA interpretation. MSc, YB, and MS supported the

critical data interpretation and reviewed the manuscript. MS and AT are PIs of the Sorbs cohort. AT and PK initiated, conceived, and designed the study. MK, AT, and PK contributed to critical data discussion and wrote the final version of the manuscript.

Funding information This work was supported by grants from the Deutsche Forschungsgemeinschaft (DFG, German Research Foundation – Projektnummer 209933838 – SFB 1052; B03, C01; SPP 1629 TO 718/2- 1, and GZ: KE 2182/1-1), from the German Diabetes Association and from the DHFD (Diabetes Hilfs- und Forschungsfonds Deutschland). IFB Adiposity Diseases is supported by the Federal Ministry of Education and Research (BMBF), Germany, FKZ: 01EO1501 (AD2-060E, AD2-06E95, AD2-7123, AD2-7118, K7-117, AD2-6E96, AD2-6E97).

Compliance with ethical standards

All participants gave their written informed consent, and the study was approved by the ethics committee of the University of Leipzig.

Conflict of interest The authors declare that they have no conflict of interest.

Abbreviations apoE, apolipoprotein E; *CELSR2*, cadherin EGF LAG seven-pass g-type receptor 2; EMSA, electrophoretic mobility shift assays; eQTL, expression quantitative trait loci; GWAS, genome-wide association study; LD, linkage disequilibrium; MAF, minor allele frequency; *MYBPHL*, myosin binding protein H like; NF- κ B, nuclear factor kappa-light-chain-enhancer of activated B cells; PBMC, peripheral blood mononuclear cell; PMCA, phylogenetic module complexity analysis; *PSRC1*, proline and serine rich coiled-coil 1; PGRN/*GRN*, progranulin; SNP, single-nucleotide polymorphism; *SORT1*, sortilin 1; TCF/LEF, transcription factor/lymphoid enhancer binding factor; YY1, Yin Yang 1 transcription factor

Open Access This article is licensed under a Creative Commons Attribution 4.0 International License, which permits use, sharing, adaptation, distribution and reproduction in any medium or format, as long as you give appropriate credit to the original author(s) and the source, provide a link to the Creative Commons licence, and indicate if changes were made. The images or other third party material in this article are included in the article's Creative Commons licence, unless indicated otherwise in a credit line to the material. If material is not included in the article's Creative Commons licence and your intended use is not permitted by statutory regulation or exceeds the permitted use, you will need to obtain permission directly from the copyright holder. To view a copy of this licence, visit <http://creativecommons.org/licenses/by/4.0/>.

References

1. Nguyen AD, Nguyen TA, Martens LH, Mitic LL, Farese RV Jr (2013) Progranulin: at the interface of neurodegenerative and metabolic diseases. *Trends Endocrinol Metab* 24(12):597–606
2. Youn B-S, Bang S-I, Kloting N, Park JW, Lee N, Oh J-E, Pi K-B, Lee TH, Ruschke K, Fasshauer M, Stumvoll M, Bluher M (2009) Serum progranulin concentrations may be associated with macrophage infiltration into omental adipose tissue. *Diabetes* 58(3):627–636
3. Matsubara T, Mita A, Minami K, Hosooka T, Kitazawa S, Takahashi K, Tamori Y, Yokoi N, Watanabe M, Matsuo E-I, Nishimura O, Seino S (2012) PGRN is a key adipokine mediating

- high fat diet-induced insulin resistance and obesity through IL-6 in adipose tissue. *Cell Metab* 15(1):38–50
4. Bhandari V, Bateman A (1992) Structure and chromosomal location of the human granulin gene. *Biochem Biophys Res Commun* 188(1):57–63
 5. Ward ME, Chen R, Huang H-Y, Ludwig C, Telpoukhovskaia M, Taubes A, Boudin H, Minami SS, Reichert M, Albrecht P, Gelfand JM, Cruz-Herranz A, Cordano C, Alavi MV, Leslie S, Seeley WW, Miller BL, Bigio E, Mesulam MM, Bogyo MS, Mackenzie IR, Staropoli JF, Cotman SL, Huang EJ, Gan L, Green AJ (2017) Individuals with progranulin haploinsufficiency exhibit features of neuronal ceroid lipofuscinosis. *Sci Transl Med* 9(385):eaah5642
 6. Gass J, Cannon A, Mackenzie IR, Boeve B, Baker M, Adamson J, Crook R, Melquist S, Kuntz K, Petersen R, Josephs K, Pickering-Brown SM, Graff-Radford N, Uitti R, Dickson D, Wszolek Z, Gonzalez J, Beach TG, Bigio E, Johnson N, Weintraub S, Mesulam M, White CL III, Woodruff B, Caselli R, Hsiung GY, Feldman H, Knopman D, Hutton M, Rademakers R (2006) Mutations in progranulin are a major cause of ubiquitin-positive frontotemporal lobar degeneration. *Hum Mol Genet* 15(20):2988–3001
 7. Baker M, Mackenzie IR, Pickering-Brown SM, Gass J, Rademakers R, Lindholm C, Snowden J, Adamson J, Sadovnick AD, Rollinson S, Cannon A, Dwosh E, Neary D, Melquist S, Richardson A, Dickson D, Berger Z, Eriksen J, Robinson T, Zehr C, Dickey CA, Crook R, McGowan E, Mann D, Boeve B, Feldman H, Hutton M (2006) Mutations in progranulin cause tau-negative frontotemporal dementia linked to chromosome 17. *Nature* 442(7105):916–919
 8. Cruts M, Gijselink I, van der Zee J, Engelborghs S, Wils H, Pirici D, Rademakers R, Vandenbergher R, Dermaut B, Martin J-J, van Duijn C, Peeters K, Sciot R, Santens P, de Pooter T, Mattheijssens M, van den Broeck N, Cuijt I, Vennekens K, de Deyn PP, Kumar-Singh S, van Broeckhoven C (2006) Null mutations in progranulin cause ubiquitin-positive frontotemporal dementia linked to chromosome 17q21. *Nature* 442(7105):920–924
 9. Minami SS, Min S-W, Krabbe G, Wang C, Zhou Y, Asgarov R, Li Y, Martens LH, Elia LP, Ward ME, Mucke L, Farese RV Jr, Gan L (2014) Progranulin protects against amyloid beta deposition and toxicity in Alzheimer's disease mouse models. *Nat Med* 20(10):1157–1164
 10. Carrasquillo MM, Nicholson AM, Finch N, Gibbs JR, Baker M, Rutherford NJ, Hunter TA, DeJesus-Hernandez M, Bisceglia GD, Mackenzie IR, Singleton A, Cookson MR, Crook JE, Dillman A, Hernandez D, Petersen RC, Graff-Radford NR, Younkin SG, Rademakers R (2010) Genome-wide screen identifies rs646776 near sortilin as a regulator of progranulin levels in human plasma. *Am J Hum Genet* 87(6):890–897
 11. Tönjes A, Scholz M, Krüger J, Krause K, Schleinitz D, Kirsten H, Gebhardt C, Marzi C, Grallert H, Ladenvall C, Heyne H, Laurila E, Kriebel J, Meisinger C, Rathmann W, Gieger C, Groop L, Prokopenko I, Isomaa B, Beutner F, Kratzsch J, Fischer-Rosinsky A, Pfeiffer A, Krohn K, Spranger J, Thiery J, Blüher M, Stumvoll M, Kovacs P (2018) Genome-wide meta-analysis identifies novel determinants of circulating serum progranulin. *Hum Mol Genet* 27(3):546–558
 12. Nicholson AM, Finch NA, Almeida M, Perkerson RB, van Blitterswijk M, Wojtas A, Cenik B, Rotondo S, Inskeep V, Almasy L et al (2016) Prosaposin is a regulator of progranulin levels and oligomerization. *Nat Commun* 7:11992
 13. Musunuru K, Strong A, Frank-Kamenetsky M, Lee NE, Ahfeldt T, Sachs KV, Li X, Li H, Kuperwasser N, Ruda VM, Pirruccello JP, Muchmore B, Prokumina-Olsson L, Hall JL, Schadt EE, Morales CR, Lund-Katz S, Phillips MC, Wong J, Cantley W, Racie T, Ejebe KG, Orho-Melander M, Melander O, Koteliansky V, Fitzgerald K, Krauss RM, Cowan CA, Kathiresan S, Rader DJ (2010) From noncoding variant to phenotype via SORT1 at the 1p13 cholesterol locus. *Nature* 466(7307):714–719
 14. Kjolby M, Andersen OM, Breiderhoff T, Fjorback AW, Pedersen KM, Madsen P, Jansen P, Heeren J, Willnow TE, Nykjaer A (2010) Sort1, encoded by the cardiovascular risk locus 1p13.3, is a regulator of hepatic lipoprotein export. *Cell Metab* 12(3):213–223
 15. Cheng HS, Besla R, Li A, Chen Z, Shikatani EA, Nazari-Jahantigh M, Hammoutène A, Nguyen M-A, Geoffrion M, Cai L, Khyzha N, Li T, MacParland SA, Husain M, Cybulsky MI, Boulanger CM, Temel RE, Schober A, Rayner KJ, Robbins CS, Fish JE (2017) Paradoxical suppression of atherosclerosis in the absence of microRNA-146a. *Circ Res* 121(4):354–367
 16. Goettsch C, Hutcheson JD, Aikawa M, Iwata H, Pham T, Nykjaer A, Kjolby M, Rogers M, Michel T, Shibasaki M, Hagita S, Kramann R, Rader DJ, Libby P, Singh SA, Aikawa E (2016) Sortilin mediates vascular calcification via its recruitment into extracellular vesicles. *J Clin Invest* 126(4):1323–1336
 17. Zhang Z, Jiang W, Yang H, Lin Q, Qin X (2018) The miR-182/SORT1 axis regulates vascular smooth muscle cell calcification in vitro and in vivo. *Exp Cell Res* 362(2):324–331
 18. Böttcher Y, Unbehauen H, Klötting N, Ruschke K, Körner A, Schleinitz D, Tönjes A, Enigk B, Wolf S, Dietrich K et al (2009) Adipose tissue expression and genetic variants of the bone morphogenetic protein receptor 1A gene (BMPRIA) are associated with human obesity. *Diabetes* 58(9):2119–2128
 19. Veeramah KR, Tonjes A, Kovacs P, Gross A, Wegmann D, Geary P, Gasperikova D, Klimes I, Scholz M, Novembre J et al (2011) Genetic variation in the Sorbs of eastern Germany in the context of broader European genetic diversity. *Eur J Human Genet* 19(9):995–1001
 20. Claussnitzer M, Dankel SN, Klocke B, Grallert H, Glunk V, Berulava T, Lee H, Oskolkov N, Fadista J, Ehlers K, Wahl S, Hoffmann C, Qian K, Rönn T, Riess H, Müller-Nurasyid M, Bretschneider N, Schroeder T, Skurk T, Horsthemke B, Spieler D, Klingenspor M, Seifert M, Kern MJ, Mejhert N, Dahlman I, Hansson O, Hauck SM, Blüher M, Arner P, Groop L, Illig T, Suhre K, Hsu YH, Mellgren G, Hauner H, Laumen H, Voight BF, Scott LJ, Steinthorsdottir V, Morris AP, Dina C, Welch RP, Zeggini E, Huth C, Aulchenko YS, Thorleifsson G, McCulloch LJ, Ferreira T, Grallert H, Amin N, Wu G, Willer CJ, Raychaudhuri S, McCarroll SA, Langenberg C, Hofmann OM, Dupuis J, Qi L, Segrè AV, van Hoek M, Navarro P, Ardlie K, Balkau B, Benediktsson R, Bennett AJ, Blagieva B, Boerwinkle E, Bonnycastle LL, Boström KB, Bravenboer B, Bumpstead S, Burtt NP, Charpentier G, Chines PS, Cornelis M, Couper DJ, Crawford G, Doney ASF, Elliott KS, Elliott AL, Erdos MR, Fox CS, Franklin CS, Ganser M, Gieger C, Grarup N, Green T, Griffin S, Groves CJ, Guiducci C, Hadjadj S, Hassanali N, Herder C, Isomaa B, Jackson AU, Johnson PRV, Jørgensen T, Kao WHL, Klopp N, Kong A, Kraft P, Kuusisto J, Lauritzen T, Li M, Lieveise A, Lindgren CM, Lyssenko V, Marre M, Meitinger T, Midthjell K, Morken MA, Narisu N, Nilsson P, Owen KR, Payne F, Perry JRB, Petersen AK, Platou C, Proença C, Prokopenko I, Rathmann W, Rayner NW, Robertson NR, Rocheleau G, Roden M, Sampson MJ, Saxena R, Shields BM, Shrader P, Sigurdsson G, Sparsø T, Strassburger K, Stringham HM, Sun Q, Swift AJ, Thorand B, Tichet J, Tuomi T, van Dam RM, van Haefen TW, van Herpt T, van Vliet-Ostapchouk JV, Walters GB, Weedon MN, Wijmenga C, Witteman J, Bergman RN, Cauchi S, Collins FS, Gloyn AL, Gyllenstein U, Hansen T, Hide WA, Hitman GA, Hofman A, Hunter DJ, Hveem K, Laakso M, Mohlke KL, Morris AD, Palmer CNA, Pramstaller PP, Rudan I, Sijbrands E, Stein LD, Tuomilehto J, Uitterlinden A, Walker M, Wareham NJ, Watanabe RM, Abecasis GR, Boehm BO, Campbell H, Daly MJ, Hattersley AT, Hu FB, Meigs JB, Pankow JS, Pedersen O, Wichmann HE, Barroso I, Florez JC, Frayling TM, Groop L, Sladek R,

- Thorsteinsdottir U, Wilson JF, Illig T, Froguel P, van Duijn CM, Stefansson K, Altshuler D, Boehnke M, McCarthy MI (2014) Leveraging cross-species transcription factor binding site patterns: from diabetes risk loci to disease mechanisms. *Cell* 156(1–2):343–358
21. Rohde K, Keller M, Klos M, Schleinitz D, Dietrich A, Schon MR, Gartner D, Lohmann T, Dressler M, Stumvoll M et al (2014) Adipose tissue depot specific promoter methylation of TMEM18. *J Mol Med* 92(8):881–888
 22. Tonjes A, Koriath M, Schleinitz D, Dietrich K, Bottcher Y, Rayner NW, Almgren P, Enigk B, Richter O, Rohm S et al (2009) Genetic variation in GPR133 is associated with height: genome wide association study in the self-contained population of Sorbs. *Hum Mol Genet* 18(23):4662–4668
 23. R Development Core Team (2008) (2008) R. A language and environment for statistical computing. R Foundation for Statistical Computing, Wien
 24. Tolkathev D, Malik S, Vinogradova A, Wang P, Chen Z, Xu P, Bennett HPJ, Bateman A, Ni F (2008) Structure dissection of human progranulin identifies well-folded granulin/epithelin modules with unique functional activities. *Protein Sci* 17(4):711–724
 25. Cenik B, Sephton CF, Kutluk Cenik B, Herz J, Yu G (2012) Progranulin: a proteolytically processed protein at the crossroads of inflammation and neurodegeneration. *J Biol Chem* 287(39):32298–32306
 26. Fu Y, Sun Y, Zhou M, Wang X, Wang Z, Wei X, Zhang Y, Su Z, Liang K, Tang W et al (2017) Therapeutic potential of progranulin in hyperhomocysteinemia-induced cardiorenal dysfunction. *Hypertension* 69(2):259–266
 27. Hsieh P-C, Chiang M-L, Chang J-C, Yan Y-T, Wang F-F, Chou Y-C (2012) DDA3 stabilizes microtubules and suppresses neurite formation. *J Cell Sci* 125(17):4171
 28. Chen N, Wang J (2018) Wnt/ β -catenin signaling and obesity. *Front Physiol* 9:792
 29. Zhao Y-P, Liu B, Tian Q-Y, Wei J-L, Richbourgh B, Liu C-J (2015) Progranulin protects against osteoarthritis through interacting with TNF- α and β -catenin signalling. *Ann Rheum Dis* 74(12):2244–2253
 30. Farag AGA, Shoaib MA, Samaka RM, Abdou AG, Mandour MM, Ibrahim RAL (2019) Progranulin and beta-catenin in psoriasis: an immunohistochemical study. *J Cosmet Dermatol* 18:2019–2026
 31. Guo K, Hu L, Xi D, Zhao J, Liu J, Luo T, Ma Y, Lai W, Guo Z (2018) PSRC1 overexpression attenuates atherosclerosis progression in apoE^{-/-} mice by modulating cholesterol transportation and inflammation. *J Mol Cell Cardiol* 116:69–80

Publisher's note Springer Nature remains neutral with regard to jurisdictional claims in published maps and institutional affiliations.

Affiliations

Maria Keller^{1,2,3} · Claudia Gebhardt¹ · Sandra Huth⁴ · Dorit Schleinitz³ · Henrike Heyne⁵ · Markus Scholz⁶ · Michael Stumvoll^{1,3} · Yvonne Böttcher^{7,8} · Anke Tönjes³ · Peter Kovacs³ 

¹ Helmholtz Institute for Metabolic, Obesity and Vascular Research (HI-MAG) of the Helmholtz Center Munich, University Hospital Leipzig, University of Leipzig, 04103 Leipzig, Germany

² Department of Clinical Sciences, Genetic and Molecular Epidemiology Unit, Lund University, Skåne University Hospital Malmö, 20502 Malmö, Sweden

³ Medical Department III – Endocrinology, Nephrology, Rheumatology, University of Leipzig Medical Center, 04103 Leipzig, Germany

⁴ Institute of Biochemistry, Medical Faculty, University of Leipzig, 04103 Leipzig, Germany

⁵ Institute of Human Genetics, University of Leipzig, 04103 Leipzig, Germany

⁶ Institute for Medical Informatics, Statistics and Epidemiology, University of Leipzig, 04107 Leipzig, Germany

⁷ Institute of Clinical Medicine, University of Oslo, Oslo, Norway

⁸ Department of Clinical Molecular Biology, Akershus Universitetssykehus, Lørenskog, Norway